

# Headquarter Remodel

Chicago, IL

Prepared By:

**The Floors, Inc.**

123 ProMat Drive



Turner Construction

The Design Group

# INDEX

The Floors Submittal Cover Page II	1
The Floors - Projects	2
The Floors Warranty copy	3
The Floors - Materials on Project	4

Designation	CSI Number	Company	Product
CPT-1, 24x24	09 68 13	Mannington	Portela -- Infinity Modular
	Seaming Diagram II		
VP-1, 12X24 Her.bone	09 65 19	Patcraft	Metallix (Rectangle)
VWB-1, 2.5 inch	09 65 13.13	Johnsonite	Traditional Rubber and Vinyl Wall Base
CT-1, 18x18	09 30 13	Daltile	Keystones
	Seaming Diagram 1st Floor		
Entry Mats	12 48 13	Mats Inc	Super Nop 52
Sundries	09 30 00	LATICRETE	Cementitious Grouts



## SUBMITTAL PACKAGE

---

**The Floors, Inc.**

Headquarters

123 Adhesive Drive, Chicago, IL 60103

p: 630.123.4567

f: 630.123.7890

info@the floors.com

**The Floors, Inc.**

Sales & Showroom

135 Design Ave., Suite 100, Chicago, IL 60605

p: 630.123.4567

f: 630.123.7890

contact@thefloors.com

---

## FLOORING MATTERS.

*It matters to you because it must look fantastic, wear well, and give a great return on investment. It matters to us because flooring is our life. It's all we do. So we're proud to have been trusted with many of the largest, most prestigious flooring contracts in and around Chicagoland since 1989.*



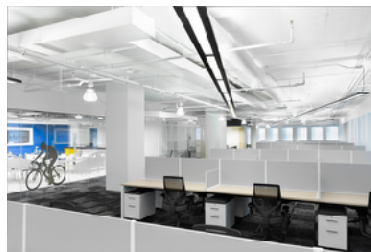
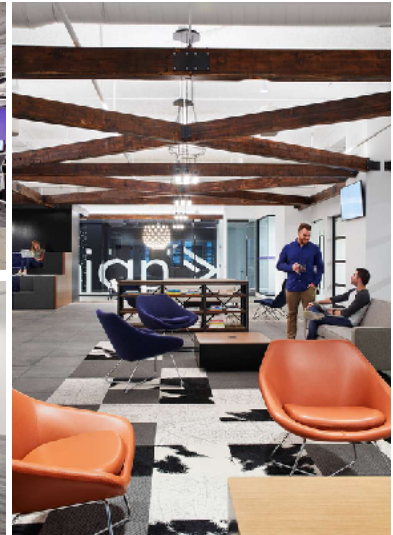
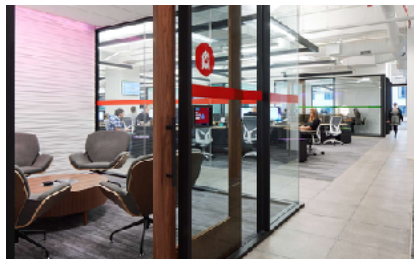
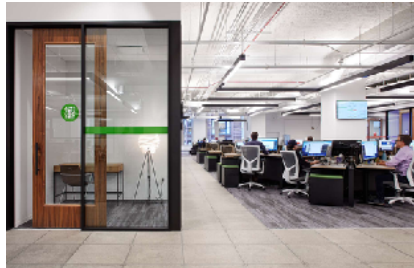
THE FLOORS

# Project Portfolio

WE FOCUS ON THE RIGHT PRODUCT FOR THE APPLICATION NOT JUST IN TERMS OF AESTHETICS BUT IN LONG-TERM PERFORMANCE AND EASE OF MAINTENANCE.

## ACTIVE CAMPAIGN

- Chicago, IL
- Internet Marketing Service
- Images Provided by Eastlake Studio



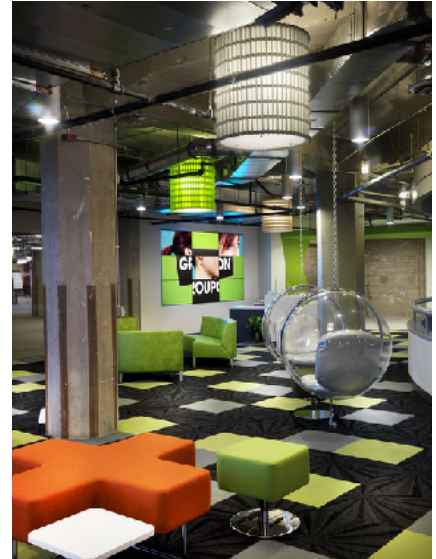
## GETTY IMAGES

- Chicago, IL
- 13,600 sq ft
- Digital Media Company
- Armstrong VCT, Lonseal, Milliken Carpet Tile, and Johnsonite Base
- Images Provided by Box Studios

# Project Portfolio

## GROUPON

- Chicago, IL
- 400,000 sq ft
- E-commerce Marketplace
- Shaw Carpet Tile, Mondo, Milliken LVT, and Armstrong VCT
- Images Provided by Box Studios
- Design Entry and Honorable Mention for Starnet Worldwide Commercial Flooring ([click for details](#))



## FTI CONSULTING

- Chicago, IL
- Shaw Carpet Tile, J&J Carpet Tile, Expanko Cork, and Ecosurfaces
- Business Management Consultant





# Labor Warranty

---

**Date:** [DATE HERE]

**To:** [NAME HERE]

**Re:** [Project name here]

THE FLOORS, INC. hereby warrants and guarantees the above referenced project to be free from defects in the workmanship for a period of ONE YEAR from the Date of Substantial Completion. The installation is warranted by THE FLOORS, INC. and the materials are warranted by the manufacturer.

This warranty does not include normal wear, tear, repair or replacement of materials which have been abused, neglected, or not maintained in accordance with the manufacturers' recommended maintenance procedures and schedules.

All warranty calls should be directed to:

THE FLOORS  
Headquarters  
123 Primer St., Chicago, IL 60103  
p: 630.xxx.xxxx  
f: 630.xxx.xxxx  
info@thefloors.com

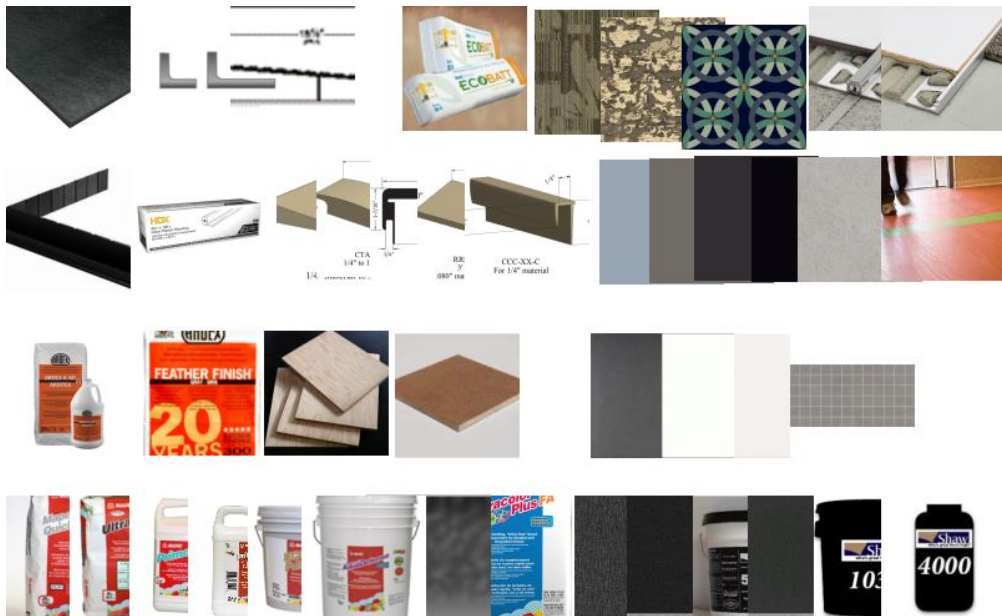
Respectfully,

Rich Wood, President  
THE FLOORS, INC.



## SUBMITTAL PACKAGE

# Materials Supplied on Project



## Materials Included in Package

*The Floors, Inc. is dedicated to provide the highest level of service for all of our customers. We have serviced the commercial construction market for over 20 years with unwavering quality and industry expertise. Above, is a pictorial representation of the products being used on this project as specified.*



**Manufacturer**

Mannington

**Product Designation**

CPT-1, 24x24

**Product Name**

Portela -- Infinity Modular

**Color Name/Color Number**

St. John/1412

**Product Number**

---

Project: **Headquarter Remodel**

---

**Category**

Flooring

**Type**

Carpet

**Submitted by**

The Floors

[www.specifixapp.com](http://www.specifixapp.com)

**Architect**

The Design Group

**General Contractor**

Turner Construction

Documents in bold included:

**Spec Sheet**

[Installation Sheet]

[Maintenance Sheet]

[Warranty Sheet]

**Msds Sheet**



**PHYSICAL CONSTRUCTION:**

CONSTRUCTION:	Patterned Loop (Non-Ortho Phthalate Construction)
FACE FIBER:	Invista Antron Legacy Type 6,6 Four Hole, Hollow Filament Nylon, with Permanent Stain and Bleach Protection, Static Control, and Duratech Soil Resistant Treatment, and a Fiber Modification Ratio of <1.5
DYE METHOD:	Solution / Yarn
GAUGE:	5/64
STITCHES PER INCH:	10.16
PILE THICKNESS:	.118 Inches
TUFTED YARN WEIGHT:	21 Ounces Per Square Yard
DENSITY:	Average Density = 6,406; Weight Density = 134,542
PRIMARY BACKING:	100% Synthetic
SECONDARY BACKING:	Infinity Modular Reinforced Composite Closed Cell Polymer
STANDARD SIZE:	24" X 24" Modular Tiles
INSTALLATION METHOD:	Monolithic, Horizontal Brick Ashlar, or Quarter-Turn

**ENVIRONMENTAL:**

RECYCLED CONTENT:	Contains Pre-Consumer Recycled Content*
MANUFACTURE LOCATION:	Calhoun, Georgia 30701 USA
NSF / ANSI-140 CERTIFICATION:	Gold
CRI GREEN LABEL PLUS ID:	GLP7616
3 <sup>rd</sup> Party Certified Product Specific Type III EPD	

**WARRANTIES:**

WARRANTY:	Lifetime Limited Warranty, Including Face Wear, Moisture Barrier, Delamination, Tuft Bind, Unraveling, and Static Protection
BLEACH RESISTANT WARRANTY:	ColorSafe with 15 Year Limited Warranty Against Color Loss from Bleach Spills
STAIN RESISTANT WARRANTY:	XGUARD with 15 Year Limited Warranty Against Staining

**PRODUCT TESTING:**

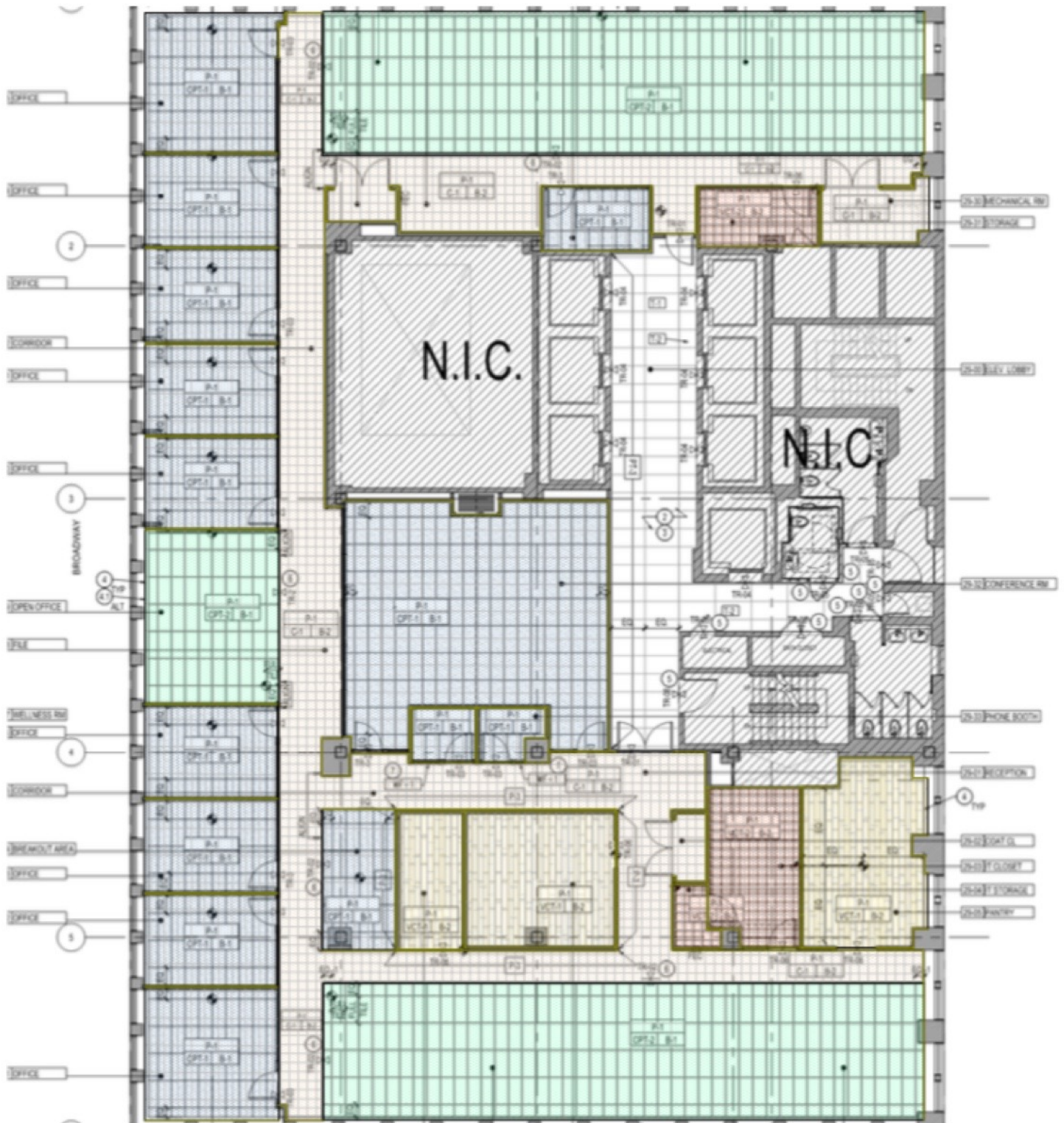
RADIANT PANEL (ASTM E-648):	Class I (Direct Glue)
SMOKE CHAMBER (ASTM E-662):	Less than 450 (Flaming Mode)
METHENAMINE PILL TEST (ASTM D-2859):	Passes
DIMENSIONAL STABILTY AACHEN TEST:	Passes
ELECTROSTATIC PROPENSITY (AATCC 134):	Less than 3.0 KV

**RECOMMENDED ADHESIVE:**

RELEASEABLE ADHESIVE:	Mannington Infinity Pressure Sensitive Adhesive
CRI GREEN LABEL PLUS ID:	GLP70522
VOC LIMITS:	Meets SCAQMD Rule #1168
BOND WARRANTY:	Lifetime Limited Warranty When Used With Mannington Carpet

Specifications are subject to normal manufacturing variances. Specifications are subject to change without notice when technological advancements provide improved product performance.

\* Please contact Mannington Technical Services at 1-800-241-2262 for updated, specific recycled content percentages for each product.



- CPT-1 (Mannington) Scaffold Color Crosstown 11212 18x36: TBD
- CPT-2 (Mannington) Span Color Borough 15217 18x36: TBD
- Grind and polish: TBD
- VCT-1 (Interface) Level Set Color: A00208 Sand Dune 10x40: TBD
- VCT-2 (Armstrong) SDT Color: Armour Gray 51951 12x12: TBD

Project: **Headquarter Remodel**

123 ProMat Drive

Project #: 1234

---



<http://www.patcraft.com/>

**Manufacturer**

Patcraft

**Product Designation**

VP-1, 12X24 Her.bone

**Product Name**

Mixed Materials Converge Collection - Metallix  
(Rectangle)

**Color Name/Color Number**

Titanium/00780

**Product Number**

I314V

Project: **Headquarter Remodel**

---

**Category**

Flooring

**Type**

Resilient Tile

**Submitted by**

The Floors

[www.specifixapp.com](http://www.specifixapp.com)

**Architect**

The Design Group

**General Contractor**

Turner Construction

**Documents in bold included:**

**Spec Sheet**

[Installation Sheet]

[Maintenance Sheet]

[Warranty Sheet]

**Msds Sheet**

## Metallix (Rectangle)

---

### Product Specifications

---

Collection Name	Mixed Materials Converge
Style Number	I314V
Construction	LVT
Wear Layer	40 mil
Wear Layer Thickness	.039 inches (1 mm)
Overall Thickness	.197 inches (5 mm)
Finish	UV Urethane
Installation	Glue Down / Loose Lay*
Required Adhesive	Patcraft MM800

### Packaging

---

Tile Size	12 inches x 24 inches (30.48 cm x 60.96 cm)
Pieces/Box	12
Sq. Ft./Box	23.7
Weight (Lb./Box)	32

### Performance Testing

---

Static Load/ASTM F 970	Modified – 250 psi (lbs/sq.in.) – 0.002 in.
Residual Indentation/ASTM 1914	Passes <8%
Resistance to Chemicals/ASTM F 925	Passes
Radiant Flux/ASTM E 648	Class I
Smoke Density/ASTM E 662	<450

Foam cushion backing provides extra comfort underfoot, minimizes the sound of foot traffic, and allows for decreased sound transfer (IIC) between floors.

### Warranty

---

Lifetime Limited Commercial Warranty.  
Please visit [patcraft.com](http://patcraft.com) for the most current warranty information.

### Environmental

---

Recycled Content	Pre-consumer – 22%
Indoor Air Quality	FloorScore® Certified

\* Mixed Materials Converge resilient, when inset into a carpet tile installation using LokDots, may be installed without adhesive, using a loose-lay method. In areas of high traffic/rolling loads, a full spread of MM800 adhesive is required with resilient.

Project: **Headquarter Remodel**

123 ProMat Drive

Project #: 1234

---



**Manufacturer**

Johnsonite

**Product Designation**

VWB-1, 2.5 inch

**Product Name**

Wall Base - Traditional Rubber and Vinyl Wall Base

**Color Name/Color Number**

Peppercorn/TB1

**Product Number**

<http://www.johnsonite.com/>

Project: **Headquarter Remodel**

---

**Category**

Flooring

**Type**

Wall Base

**Submitted by**

The Floors

[www.specifixapp.com](http://www.specifixapp.com)

**Architect**

The Design Group

**General Contractor**

Turner Construction

**Documents in bold included:**

**Spec Sheet**

[Installation Sheet]

[Maintenance Sheet]

[Warranty Sheet]

**Msds Sheet**

**Traditional & Perceptions™ Wall Base**

**1. PROPRIETARY PRODUCT/MANUFACTURER**

**1.1. Proprietary Product: Thermoplastic Wall Base**

**1.2. Manufacturer:**

Johnsonite, Inc.	Phone	(800) 899-8916
16910 Munn Road		(440) 543-8916
Chagrin Falls, Ohio 44023	Tech:	Ext 9297
Web: www.johnsonite.com	Samples:	Ext 9299
Email: info@johnsonite.com	Fax:	(440) 543-8920

**1.3. Proprietary Product Description:**

**1.3.1. Construction:** Johnsonite Traditional Wall Base is manufactured from a proprietary rubber formulation designed specifically to meet the performance and dimensional requirements of ASTM F-1861, Type TV and TP, Group 1 (solid), Style A and B, Standard Specification for Resilient Wall Base.

**1.3.2. Physical Characteristics:**

**Rubber Wall Base**

- **Traditional:** DC-XX with toe (coved) or DCT-XX for toeless (straight), 0.125" (3.17 mm) thickness, 2-1/2" (6.35 cm), 4" (10.16 cm), 4 1/2" (11.4 cm) or 6" (15.24 cm) height

Available in 4' (1.22 m) straight lengths and 120' (36.58 m) coiled lengths. The 6" (15.24 cm) high profile available in 4' (1.22 m) straight lengths and 100' (30.48 m) coiled lengths

- **Wall Art:** WA-XX w/toe (coved), 0.125" (3.17 mm) thickness, 4" (10.16 cm) height

Available in 4' (1.22 m) straight lengths only

- **Inside and Outside Corners** available with 4" (10.16 cm) returns packaged 25 per carton, add LIC (Inside corners) or LOC (Outside corners)

**Vinyl Wall Base**

- **Traditional:** CB-XX with toe (coved) or CBT-XX toeless (straight), 0.125" (3.17 mm) or 0.080" thickness, 2-1/2" (6.35 cm), 4" (10.16 cm), or 6" (15.24 cm) height

Cartons size: Available in 4' (1.22 m) straight lengths and 120' (36.58 m) coiled lengths. The 6" (15.24 cm) high profile available in 4' (1.22 m) straight lengths and 100' (30.48 m) coiled lengths

- **Inside and Outside Corners** available with 4" (10.16 cm) returns packaged 25 per carton, add LIC (Inside corners) or LOC (Outside corners)

**Perceptions™ Rubber Wall Base**

- **Recess (RWDC with angled toe or RWDCT for straight):** 0.125" (3.17 mm) thickness, 4-1/4" (10.8 cm) height, available in 120' (36.58 m) coiled lengths (or special order 4' straight lengths)
- **Royale (RWDC-XX-E):** 0.125" (3.17 mm) thickness, 4-1/4" (10.8 cm) height, 120' (36.58 m) coiled lengths (or special order 4' straight lengths).
- **Flex (RWDC-XX-F):** 0.125" (3.17 mm) thickness, 4-1/4" (10.8 cm) height, 120' (36.58 m) coiled lengths (or special order 4' straight lengths)
- **Contour (RWDC-XX-G):** 0.125" (3.17 mm) thickness, 4-1/4" (10.8 cm) height, 120' (36.58 m) coiled lengths (or special order 4' straight lengths)
- **Inside and Outside Corners** available with 4" (10.16 cm) returns packaged 25 per carton, add LIC (Inside corners) or LOC (Outside corners)

**2. PRODUCT PERFORMANCE AND TECHNICAL DATA**

- Meets or exceeds the performance requirements for resistance to heat/light aging, chemicals, and dimensional stability when tested to the methods, as described, in ASTM F-1861.
- **Flexibility:** Will not crack, break, or show any signs of fatigue when bent around a 1/4" (6.4 mm) diameter cylinder.
- **Chemical resistance (ASTM F 925):** Passes – 5% acetic acid, 70% isopropyl alcohol, mineral oil, 5% sodium hydroxide solution, 5% hydrochloric acid solution, 5% sulfuric acid solution, 5% household ammonia solution, and 5.25% household bleach solution
- **Resistance to light (ASTM F 1515):** ΔE < 8
- **Fire Resistance:**

**Vinyl Wall Base**

ASTM E 84/NFPA 255 (Flame/Smoke) – Class B, < 450  
ASTM E 648 (NFPA 253): Critical Radiant Flux – Class I

**Rubber Wall Base**

ASTM E 84/NFPA 255 (Flame/Smoke) – Class A, < 450  
ASTM E 648 (NFPA 253): Critical Radiant Flux – Class I

**3. INSTALLATION**

Johnsonite Wall Base and adhesives must be site conditioned at room temperature for a minimum of 48 hours prior to, during, and after installation. Room temperature must be maintained between 65° and 85°F (18° and 30°C) with HVAC system operating. A minimum temperature of 55°F (13°C) must be maintained afterwards. The ambient relative humidity should be between 40% and 60%.

**Traditional & Perceptions™ Wall Base**

All walls must be clean, smooth, flat and dry. The surface must be free of all dust, loose particles, solvents, paint, grease, oil, wax, alkali, sealing/curing compounds, old adhesive, and any other foreign material, which could affect installation. Remove existing adhesive mechanically – do not use chemical adhesive removers or solvents. Fill all depressions, cracks, and other surface irregularities with a good quality patching compound.

Caution: Do not use liquid solvents or adhesive removers.

Do not install Johnsonite BaseWorks Wall Base over vinyl wall coverings.

Do not install Johnsonite Wall Base over non-porous surfaces with Johnsonite 960 Wall Base Adhesive. For non-porous surfaces apply Johnsonite 946 Premium Contact Adhesive.

For current Installation and Maintenance Instructions, Product Specifications, and other technical data, visit us on the web at [www.johnsonite.com](http://www.johnsonite.com) or contact Johnsonite at 800-899-8916.

**3.1. Adhesives:**

**960 Cove Base Adhesive (porous surfaces)**

Approximate coverage:

- 2 ½" high – 300 to 350 linear feet/gallon
- 4" high – 200 to 250 linear feet/gallon
- 6" high – 100 to 150 linear feet/gallon

**946 Premium Contact Adhesive (non-porous surfaces)**

Application: Brush or roller

Approximate coverage:

- 1 kg Unit (0.95 Qt) – 24 to 36 sq. ft. per unit
- 6 kg Unit (1.44 Gal.) – 144 to 215 sq. ft. per unit

**3.2. Installation Manual:** Refer to Johnsonite Wall Base Installation Instructions for complete installation details.

**4. AVAILABILITY AND COST**

Available through authorized Johnsonite distributors nationwide.

**5. WARRANTY**

Limited 2 year warranty. For complete details, contact Johnsonite or an authorized Johnsonite distributor.

**6. MAINTENANCE**

Refer to Johnsonite Wall Base Installation Instructions for complete maintenance details.

**7. TECHNICAL SERVICES**

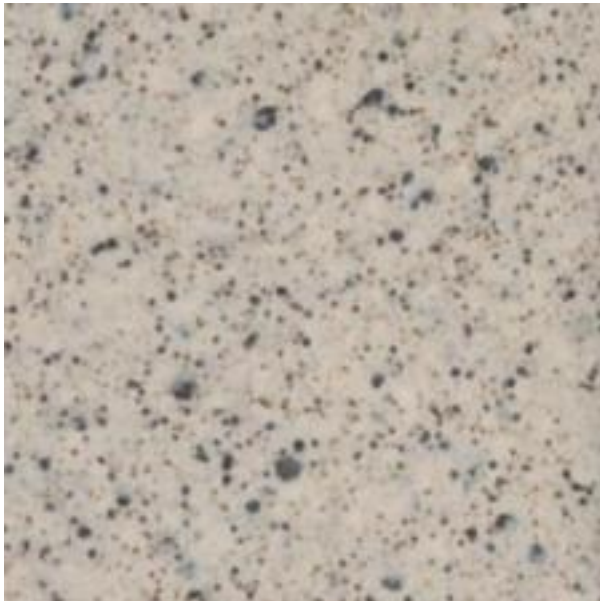
Samples: Submittal samples for verification and approval available upon request from Johnsonite. Samples shall be submitted in compliance with the requirements of the Contract Documents. Accepted and approved samples shall constitute the standard materials which represent materials installed on the project.

Project: **Headquarter Remodel**

123 ProMat Drive

Project #: 1234

---



<https://www.daltile.com/>

**Manufacturer**

Daltile

**Product Designation**

CT-1, 18x18

**Product Name**

Mosaic Tile - Keystones

**Color Name/Color Number**

Buffstone Range (1)/

**Product Number**

BUFFSTONE RANGE (1) D147

Project: **Headquarter Remodel**

---

**Category**

Tiling

**Type**

Ceramic

**Submitted by**

The Floors

[www.specifixapp.com](http://www.specifixapp.com)

**Architect**

The Design Group

**General Contractor**

Turner Construction

**Documents in bold included:**

**Spec Sheet**

[Installation Sheet]

[Maintenance Sheet]

[Warranty Sheet]

**Msds Sheet**





May contain Recycled  
and/or Reclaimed Materials  
[www.dalTile.com/leed](http://www.dalTile.com/leed)

## SAFETY DATA SHEET

### CERAMIC TILE

**Tile Series:    Keystone**

#### 1. PRODUCT IDENTIFICATION

**Common Name:** Ceramic Tile (For purposes of this SDS, the term “ceramic” encompasses all types of tile products manufactured/sourced by Dal-Tile Corporation.)

**Synonyms:** Ceramic Tile and Wares

**Manufacturer Name:** Dal-Tile Corporation

**Address:** Headquarters Office  
7834 C.F. Hawn Freeway, Dallas, TX 75217

**Emergency Assistance:** Environmental, Health and Safety Department  
Richard Ray - (214) 309-4295  
1-800-933-TILE; (214) 398-1411 (24-hour number)

**Recommended Use:** Building Material - Tile products manufactured/sourced by Dal-Tile Corporation are environmentally preferable building materials when compared to other floor/wall coverings. As defined by guidelines issued by the Environmental Protection Agency, the American Society for Testing & Materials, and the Federal Trade Commission, Tile is one of the most environmentally friendly building materials you can buy today. Should you desire additional information, please direct your inquiry to the address above.

This document has been prepared in accordance with the Occupational Safety and Health Administration (OSHA) Hazard Communication standard, 29 Code of Federal Regulations (CFR) 1910.1200(g), Safety Data Sheets.

#### 2. HAZARDS IDENTIFICATION

Tile products are mixtures of predominantly clays, silica sand, and other natural occurring minerals that have been mixed with water and fired in a high temperature kiln. The finished, fired tiles are odorless, stable, non-flammable, and pose no immediate hazard to health. Respiratory, hand and eye protection may be needed to prevent excess exposure to airborne particulates if dust is produced by cutting tiles during installation or if dust is produced by any other operations, including demolition/removal projects.

Emergency Overview: Danger! Lung injury and Cancer Hazard

GHS Classification (Global Harmonized Standard Classification):



Carcinogenicity Category 1A (H350)

Specific target organ toxicity, single exposure; Respiratory tract irritation - Category 3 (H335)

Specific target organ toxicity, repeated exposure - Category 1A (H372)

GHS Label, Hazards and Precautionary Statements

GHS Pictogram:

Crystalline Silica:		Category 3 (Respiratory tract irritation) (H335)
		Categories 1A(Carcinogenicity)(H372)

Label Signal Word: Danger

Hazard Statements:

(H350) May cause CANCER (inhalation)

(H335) May cause respiratory irritation

(H372) Causes damage to organs (lung/respiratory) through prolonged or repeated exposure (inhalation)

## 2. HAZARDS IDENTIFICATION (CONT)

### Precautionary Statements:

- Do not handle until all safety precautions have been read and understood. (P202)
- Do not breathe dust/spray. (P260 + P261)
- Wash skin thoroughly after handling. (P264)
- Do not eat, drink or smoke when using this product. (P270)
- Wear protective gloves, protective clothing, eye protection, face protection. (P280)

### Potential Health Effects:

Inhalation: Do not breathe dust. See "Health Hazards" in Section 11 for more details.

## 3. COMPOSITION/INFORMATION ON INGREDIENTS

Tile products are mixtures of predominately Clays, Silica Sand and other naturally-occurring minerals, that have been mixed with water and fired in a high temperature kiln.

Tiles are manufactured in various shapes, sizes, and colors.

These products do not contain asbestos.

Under normal conditions these products do not release hazardous materials after installation and are not considered hazardous waste should disposal be necessary.

Composition	CAS# / EINECS#	Estimated % by Wt.	EU Class
Crystalline silica as quartz	CAS: 14808-60-7 EINECS: 238-878-4	0-30	(67/548/EEC) Xn R48/20
Clays	CAS: 1332-58-7 EINECS: 265-064-6	20-55	(67/548/EEC) Xi R36/37/38
Nepheline syenite	CAS: 37244-96-5 EINECS: N/A	0-50	(67/548/EEC) Xi R36/37/38
Talc	CAS: 14807-96-6 EINECS: 238-877-9	0-40	(67/548/EEC) Xi R36/37/38
Feldspar	CAS: 68476-25-5 EINECS: 270-666-7	0-15	(67/548/EEC) Xi R36/37/38
Biotite	CAS: 12001-26-2 EINECS: 215-479-3	0-5	(67/548/EEC) Xi R36/37/38

## 4. FIRST AID MEASURES

- Eyes: Immediately flush eyes with large amounts of water for at least 15 minutes if dust gets in eyes. Get medical attention if irritation persists.
- Skin: Wash thoroughly after working with tiles.
- Inhalation: Remove to fresh air if exposed to large amounts of tile dust. Administer artificial respiration if breathing has stopped. Keep victim at rest. Call for prompt medical attention.
- Ingestion: Not applicable for intact tiles.

Have emergency eyewash station available in area where tiles are cut.

## 5. FIRE-FIGHTING MEASURES AND INFORMATION

- Flash Point (Method Used): Not applicable
- Autoignition Temperature: Not applicable
- Flammable Limits (% by Volume in Air): LEL - not applicable  
UEL - not applicable
- Fire Extinguishing Media: None required Non-flammable
- Special Fire Fighting Procedures: None required
- Fire and Explosion Hazards: None

## 6. ACCIDENTAL RELEASE MEASURES

Avoid creating excessive dust. Clean up dust with a vacuum system with a High-efficiency particulate (HEPA) air filter vacuum or damp sweeping. See Section 8 of this SDS concerning PPE information for clean-up.

## 7. HANDLING AND STORAGE

When cutting, grinding or removing, use equipment with integral dust collection and/or use local exhaust ventilation. Use wet cutting methods to reduce generation of dust. Use respiratory protection in the absence of effective engineering controls.

Do not store near acids. If tiles contact some acids, damage/discoloration to the surface may occur.

Shelf life is unlimited.

## 8. EXPOSURE CONTROLS / PERSONAL PROTECTION

### 8.1 Exposure Table

Composition	OSHA PEL	NIOSH IDLH	ACGIH TLV*	Units
Crystalline silica as quartz -respirable fraction	10 %SiO <sub>2</sub> +2	0.05	0.025	mg/m <sup>3</sup>
-total dust	30 %SiO <sub>2</sub> +2	N.E.	N.E.	mg/m <sup>3</sup>
Clays -respirable fraction	5	N.E.	2	mg/m <sup>3</sup>
-total dust**	15	N.E.	10	mg/m <sup>3</sup>
Nepheline syenite -respirable fraction**	5	N.E.	N.E.	mg/m <sup>3</sup>
-total dust**	15	N.E.	N.E.	mg/m <sup>3</sup>
Talc -respirable fraction	2	2	2	mg/m <sup>3</sup>
-total dust**	15	10	10	mg/m <sup>3</sup>
Feldspar -respirable fraction	N.E.	N.E.	N.E.	mg/m <sup>3</sup>
-total dust**	15	N.E.	N.E.	mg/m <sup>3</sup>
Biotite -respirable fraction**	5	15	3	mg/m <sup>3</sup>
-total dust**	15	N.E.	N.E.	mg/m <sup>3</sup>

\* 2006 Edition, respirable fraction to be determined as per Appendix D of ACGIH TLV.

\*\* Covered as particles not otherwise regulated per OSHA and particles not otherwise classified per ACGIH.

N.D. - Not determined

N.E. - Not established

### 8.2 EXPOSURE CONTROLS/PERSONAL PROTECTION

**Ventilation:** Use adequate ventilation to keep exposure to dust below recommended exposure levels. Avoid inhalation of dust. The highest probability of silica exposure occurs during installation using dry cutting methods or during removal of installed tile. Wet cutting methods are recommended.

**Respiratory Protection:** Use of a properly fitted NIOSH/MSHA approved particulate respirator is recommended when cutting tiles for installation or during the removal of installed tile.

**Eye Protection:** Use dust-proof goggles or safety glasses with side shields. Contact lenses may absorb irritants. Do not wear contact lenses in work areas.

**Skin Protection:** Cotton or leather work gloves should be worn when cutting this product to minimize skin exposure to dust and/or cuts. Wash hands prior to eating, drinking, or smoking, and at the end of the work shift, after cutting operations are conducted.

NOTE: Personal protection information in Section 8 is based on general information for normal uses and conditions. Where special or unusual uses or conditions exist, it is suggested that the assistance of an industrial hygienist or other qualified professional be obtained.

## 9. PHYSICAL AND CHEMICAL PROPERTIES

Appearance:	Brittle solid; color may vary
Odor:	Odorless
Melting Point:	Not Available (>2200 °F)
Boiling Point:	Not applicable
Vapor Pressure:	Not applicable
Vapor Density (Air = 1):	Not applicable
Solubility in Water:	Insoluble
Specific Gravity (H <sub>2</sub> O = 1):	1.6 to 2.1
Percent Volatile by Volume:	Not applicable
Evaporation Rate (Ethyl Ether = 1):	Not applicable
Viscosity:	Not applicable
Volatility:	0 g/L Volatile Organic Compounds (VOCs)

## 10. STABILITY AND REACTIVITY

Stability:	Stable in current form.
Conditions to Avoid:	Avoid contact with acids (e.g., acetic, hydrofluoric, etc.)
Incompatibility (Materials to Avoid):	Avoid contact with acids (e.g., acetic, hydrofluoric, etc.)
Hazardous Polymerization:	Will not occur.
Hazardous Decomposition Products:	None.

## 11. TOXICOLOGICAL INFORMATION

### Potential Health Effects

#### **Primary Routes of Exposure**

None for intact tile. Inhalation and potential exposure to eyes, hands, or other body parts if contact is made with broken tile, and/or during procedures involving the cutting of tiles, and/or for operations involving the removal of installed tiles.

#### **Acute Effects**

No acute effects from exposure to intact tile are known. Working with broken or cut tile produces a potential for cuts to the hands and exposed body parts. Acute effects such as eye irritation may occur if associated with high dust operations such as dry cutting tile or during the removal of installed tile. In very rare cases, symptoms of acute silicosis, a form of silicosis (a nodular pulmonary fibrosis) associated with exposure to respirable crystalline silica, may develop following acute exposure to extremely dusty environments caused by generation of tile dust. Signs such as labored breathing and early fatigue may indicate silicosis; however, these same symptoms can arise from many other causes.

#### **Chronic Effects**

No chronic effects are known for exposure to intact tile. Long-term, continual exposure to respirable crystalline silica at or above established permissible occupational exposure limits may lead to the development of silicosis, a nodular pulmonary fibrosis (NPF). NPFs are also associated with pulmonary tuberculosis, bronchitis, emphysema, and other airway diseases. This type of chronic exposure to silica dust may also result in the development of autoimmune disorders, chronic renal disease, and other adverse health effects. Recent epidemiologic studies demonstrate that workers exposed to elevated silica concentrations have a significant risk of developing chronic silicosis. Signs such as labored breathing and early fatigue may indicate silicosis; however, these same symptoms can also arise from many other causes.

#### **Potential Adverse Interactions**

Silicosis may be complicated by severe mycobacterial or fungal infections and result in tuberculosis (TB). Epidemiologic studies have established that silicosis is a risk factor for developing TB. Any existing respiratory or pulmonary diseases may be complicated by exposure to respirable crystalline silica. Smoking may increase the risk of adverse effects if done in conjunction with occupational exposure to silica dust at or above permissible exposure limits.

#### **Carcinogen Status**

Respirable crystalline silica is classified by the International Agency for Research on Cancer (IARC) as a Group I Carcinogen (carcinogenic to humans). The National Toxicology Program (9th Report) lists respirable crystalline silica as "Known to be a Human Carcinogen". USDOL/OSHA and NIOSH have recommended that crystalline silica be considered a potential occupational carcinogen.

#### **Overview of Animal Testing**

Short term experimental studies of rats have found that intratracheal instillation of quartz particles leads to the formation of discrete silicotic nodules in rats, mice and hamsters.

#### **Oral (silica) Lethality**

- LD50 Rat oral >22,500 mg/kg
- LD50 Mouse oral >15,000 mg/kg
- LC50 Carp >10,000 mg/l (per 72 hr.)

**12. ECOLOGICAL INFORMATION**

No information available at this time.

**13. DISPOSAL CONSIDERATIONS**

Waste should be disposed of in a landfill certified to accept such materials in accordance with federal, state, and local regulations.

**14. TRANSPORTATION INFORMATION**

D.O.T Shipping Name: Not applicable  
 Hazard Class: Non-regulated (for disposal purposes material is non-hazardous Class III regulated material)  
 ID Number: Not applicable  
 Marking: Not applicable  
 Label: None  
 Placard: None  
 Hazardous Substance/RQ: Not applicable  
 Shipping Description: Porcelain/Ceramic Tiles  
 Packaging References: None

**15. REGULATORY INFORMATION**

This product and/or its components have been previously introduced into U.S. commerce and is listed in the Toxic Substances Control Act (TSCA) Inventory of Chemicals in Commerce. Hence, it is subject to all applicable provisions and restrictions under TSCA 40 CFR Section 721 and 723.250.

This tile contains <1 percent by weight each of the following elements, which are SARA 313 Recordable: Antimony, Arsenic, Barium, Beryllium, Cadmium, Cobalt, Chromium, Copper, Manganese, Mercury, Nickel, Lead, Silver, Thallium, Tin, Titanium, Vanadium, and Zinc.

Title 22 Division 2, California Code of Regulation Chapter 3 (Proposition 65): This product contains a chemical or chemicals known to the State of California to cause cancer and/or birth defects or other reproductive harm.

This product or its components meets the following hazard definition(s) as defined by the Occupational Safety and Health Hazard Communication Standard (29 CFR Section 1910.1200):

<input type="checkbox"/> Combustible Liquid	<input type="checkbox"/> Flammable Aerosol	<input type="checkbox"/> Oxidizer
<input type="checkbox"/> Compressed Gas	<input type="checkbox"/> Explosive	<input type="checkbox"/> Pyrophoric
<input type="checkbox"/> Flammable Gas	<input checked="" type="checkbox"/> Health Hazard (Sections 3 & 11)	<input type="checkbox"/> Unstable
<input type="checkbox"/> Flammable Liquid	<input type="checkbox"/> Organic Peroxide	<input type="checkbox"/> Water Reactive
<input type="checkbox"/> Flammable Solid		

Based on information presently available, this product does not meet any of the hazard definitions of 29 CFR Section 1910.1200.

Note: The information in this data sheet provides information related to the potential hazards associated with dusts which may be produced during cutting or otherwise changing the shape of the tile during installation and/or removal.

**16. ADDITIONAL INFORMATION**

Global Harmonization Identification System

GHIS: Health: 3 Fire: 4 Reactivity: 4

Hazardous Material Identification System

HMIS: Health: 0 Fire: 0 Reactivity: 0

National Fire Protection Association

NFPA: Health: 0 Fire: 0 Reactivity: 0



Project: **Headquarter Remodel**

123 ProMat Drive

Project #: 1234

---



<http://matsinc.com/>

**Manufacturer**

Mats Inc

**Product Designation**

Entry Mats

**Product Name**

CONNEXUS™ MATTING - Super Nop 52

**Color Name/Color Number**

Autumn/

**Product Number**

Project: **Headquarter Remodel**

---

**Category**

Furnishings

**Type**

Rugs and Mats

**Submitted by**

The Floors

[www.specifixapp.com](http://www.specifixapp.com)

**Architect**

The Design Group

**General Contractor**

Turner Construction

Documents in bold included:

**Spec Sheet**

[Installation Sheet]

[Maintenance Sheet]

[Warranty Sheet]

**Msds Sheet**



## Technical Data for Super Nop 52

### Product Description

<b>Material</b>	100% Asota <sup>®</sup> solution-dyed UV stabilized polypropylene fibers
<b>Backing</b>	OxForce™ high density rubber
<b>Roll Sizes</b>	6'7" x approximately 101'8"; 13'2" x approximately 101'8"
<b>Custom Sizes</b>	6'7" x custom lengths up to 101'8"; 13'2" x custom lengths up to 101'8"

### Technical Specifications

	Test	Requirement	Super Nop 52
<b>Product Dimensions</b>			
Pile height	ISO 1776	In inches	3/8"
Total height	ISO 1776	In inches	1/2"
Pile weight	ISO 8543	In ounces per square yard	52 oz/sq yd
Total weight	ISO 8543	In ounces per square yard	93 oz/sq yd
<b>Safety</b>			
Surface flammability	ASTM D2859 CPSC FF 1-70	Test specimen must be greater than 1" in at least 7 of 8 specimens tested	Passes
<b>Performance</b>			
Static electrical propensity	ISO 6356	Antistatic: less than 2 kilovolts (kV)	< 2 kV
Sound absorption	ISO 140-8	In decibels (dB)	29 dB
Thermal resistance	DIN 52612	Max. 0.15 m2K/W (K=Kelvin)	0.09 m2K/W
<b>Color Fastness</b>			
To light	ISO 105 B02	1 = considerable change; 6 = negligible or no change	6
To water	ISO 105 E01	1 = considerable change; 6 = negligible or no change	5
To rubbing	ISO 105 x 12	1 = considerable change; 6 = negligible or no change	4
<b>LEED</b>			
MR Credit 4	LEED-NC v. 3	For 1 - 2 points: \$ value of <u>all</u> materials = min. average 10% recycled content	20% recycled (post-consumer)
IEQ Credit 4.1	LEED-NC v. 3	For 1 point: low-emitting adhesive with a VOC of 50 g/L or less for indoor carpet adhesive	Multi-Bond VOC: 0 g/L
IEQ Credit 4.3	LEED-NC v. 3	For 1 point: low-emitting flooring per Green Label Plus or FloorScore™	Green Label Plus certified
IEQ Credit 5	LEED-NC v. 3	For 1 point: semi-permanently installed entrance system at least ten feet in length and maintained on a weekly basis by a contracted service organization	Super Nop 52 is designed for semi-permanent installation.

37 Shuman Ave, Stoughton, MA 02072 • 781.573.0202





Manufacturer

LATICRETE

Product Designation

Sundries

Product Name

Grouts - Cementitious Grouts

Color Name/Color Number

Product Number

PERMACOLOR® Select\*

<http://www.laticrete.com/home.aspx>

---

Project: **Headquarter Remodel**

---

Category

Tiling

Type

Sundries

Submitted by

The Floors

[www.specifixapp.com](http://www.specifixapp.com)

Architect

The Design Group

General Contractor

Turner Construction

Documents in bold included:

**Spec Sheet**

[Installation Sheet]

[Maintenance Sheet]

[Warranty Sheet]

**Msds Sheet**



# PERMACOLOR® Select<sup>^</sup>

DS-281.0-0716

**Globally Proven  
Construction Solutions**



## 1. PRODUCT NAME

PERMACOLOR® Select <sup>^</sup>

## 2. MANUFACTURER

LATICRETE International, Inc.  
1 LATICRETE Park North  
Bethany, CT 06524-3423 USA

Telephone: +1.203.393.0010, ext. 235  
Toll Free: 1.800.243.4788, ext. 235  
Fax: +1.203.393.1684  
Internet: [www.laticrete.com](http://www.laticrete.com)

## 3. PRODUCT DESCRIPTION

PERMACOLOR Select is an advanced high performance cement grout that offers the industry's first dispensable dry pigment solution. PERMACOLOR Select is designed for virtually all types of residential and commercial installations and offers optimum performance on the most demanding exterior or interior applications. Easy to mix, grout and clean, PERMACOLOR Select is fast setting and is suitable for joints 1/16" to 1/2" (1.5mm – 12mm) wide on floors or walls.

### Advantages

- Exceeds ANSI A118.7
- Does not require sealing – Equipped with STONETECH® Sealer Technology
- Vibrant consistent color – minimizes efflorescence
- Reinforced with Kevlar® – crack & shrink resistant
- Fast setting – ready for foot traffic in as little as 3 hours
- GREENGUARD® certified – low VOC
- Equipped with Anti-Microbial protection
- LATICRETE® Lifetime Warranty available
- PERMACOLOR Color Kit – Available in all 40 colors (10 x carton) plus top competitor colors!

### Packaging

Base - 25 lbs (11.3 kg) bag  
Base - 12.5 lbs (5.6 kg) bag  
Color Packs - 10 x .5 lbs (2x100 g) cartons

### Shelf Life

Factory sealed containers of this product are guaranteed to be of first quality for the time period listed below if stored off the ground in a dry area.

- 25 lbs (11.3 kg) & 12.5 lbs (5.6 kg) bags – one (1) year
- 0.5 lbs (220 g) color kit – five (5) years

### Limitations

- Adhesives/mastics, mortars and grouts for ceramic tile, pavers, brick and stone are not replacements for waterproofing membranes. When a waterproofing membrane is required, use a LATICRETE Waterproofing Membrane (see Section 10 FILING SYSTEM).
- Use SPECTRALOCK® 2000 IG when chemical resistance is required.
- DO NOT use acid to clean colored grout joints.
- Job site conditions will affect the final color of colored grouts. Try a small test area to determine your results before grouting the entire installation.
- Certain types of tile are more absorbent than others and will trap color pigment during grouting. Prior to grouting, test for absorption of color pigment. Porous tiles will need to be sealed prior to grouting.
- Selecting other grouting materials: LATICRETE has grouting materials designed for every use. For installations that require high strength and chemical resistance choose SPECTRALOCK 2000 IG. This product is ideal for installations where a stain resistant colorfast grout is desired.

*Note: Surfaces must be structurally sound, stable and rigid enough to support ceramic/stone tile, thin brick and similar finishes. Substrate deflection under all live, dead and impact loads, including concentrated loads, must not exceed L/360 for thin bed ceramic tile/brick installations or L/480 for thin bed stone installations where L=span length.*

### Cautions

Consult SDS for more safety information.

- During cold weather, protect finished work from traffic until fully cured.
- Contains portland cement and silica sand. May irritate eyes and skin. Avoid contact with eyes or prolonged contact with skin. In case of contact, flush thoroughly with water.

- Do not take internally. Silica sand may cause cancer or serious lung problems. Avoid breathing dust. Wear a respirator in dusty areas.
- Grout may scratch soft glazed or polished surfaces. Conduct a test area to verify results.
- In submerged applications or steam rooms allow PERMACOLOR® Select<sup>^</sup> to cure for 14 days at 70°F (21°C) prior to filling with water or exposing to steam. See TDS 192 and TDS 172 for more information on these applications.
- Keep out of reach of children.

#### 4. TECHNICAL DATA

##### VOC/LEED Product Information



This product has been certified for Low Chemical Emissions (ULCOM/GG UL2818) under the UL GREENGUARD Certification Program for Chemical Emissions for Building Materials, Finishes and Furnishings (UL 2818 Standard) by UL Environment.

##### Applicable Standards (ANSI A118.6, A118.7)

##### Physical Properties

Tensile Strength (28 Days)	510 psi (3.5 MPa)
Compressive Strength (28 Days)	3500 psi (24.1 MPa)
Flexural Strength (28 Days)	1250 psi (8.62 MPa)
Linear Shrinkage (7 Days)	0.1 %
Water Absorption (28 Days)	2.8%

##### Working Properties

Pot Life	45–60 min at 70°F (21°C)
Final Set	3 – 4 hrs
Heavy Foot Traffic	6 hrs

Specifications subject to change without notification. Results shown are typical but reflect test procedures used. Actual field performance will depend on installation methods and site conditions.

#### 5. INSTALLATION

##### Surface Preparation

Before starting to grout, remove spacers and debris in grout joints and remove dust and dirt using a wet sponge. Do not leave water standing in joints. Note: when grouting in hot weather refer to TDS 176 Hot Weather Tiling and Grouting. Substrate temperature must be between 40°F (4°C) and 90°F (32°C). Apply grout release or sealer if necessary. Refer to TDS 400 Grout Guide for more information on grouting.

##### Mixing

Use approximately 2 – 2.25 quarts (1.9 L – 2.1 L) of clean potable water for 2 PERMACOLOR Select Color Packs and 25 lbs (11.3 kg) of PERMACOLOR Select Grout Base. Do not use with 1776 Grout Enhancer or any other latex additive. Place water in a clean mixing container. Remove Color Packs from the cardboard container as well as the protective plastic sleeve. The internal bag is a water-dispersible pack – when using the 25 lbs. (11.3 kg) bag of PERMACOLOR Select, drop both color packs directly to water in

clean mixing container. Mix with a drill mixer until pigment is dispersed evenly in container and the dispersible pack is no longer visible. Add PERMACOLOR Select Base. Mix with a slow speed drill mixer (300 rpm) for 1 minute. Wait for 5 minutes and remix with drill for 1 minute. If using the 12.5 lbs bag, drop only one color pack into 1 – 1.1 quarts (.8L – 1.0 L) of clean water.

##### Application

Clean tile surface with a damp sponge. Spread with a sharp, firm rubber grout float or wall float for narrow wall joints. To remove excess grout hold the float at a 90° angle and pull it at a 45° angle diagonally across the joints to avoid pulling out the material.

*Note: If the grout begins to stiffen during installation, remix with drill mixer for 10–15 seconds. DO NOT ADD MORE WATER.*

##### Cleaning

For first cleaning wait approximately 35 – 40 minutes at 70°F (21°C). Wider joints or cooler temperatures may extend wait time. Begin initial cleaning by lightly wiping down entire area to be cleaned with a damp sponge. Wash with a damp sponge (not wet). Work diagonally to the joints. Allow to dry 3 hours at 70°F (21°C). For second cleaning use a damp sponge or dry cloth to remove remaining grout haze.

*Note: Use caution when polishing soft glazed tile or polished stone. If grout is to be sealed, LATICRETE generally recommends waiting a minimum of a 72 hours at 70°F (21°C) prior to sealing PERMACOLOR Select, with a STONETECH® sealer.*

#### 6. AVAILABILITY AND COST

##### Availability

LATICRETE® and LATAPOXY® materials are available worldwide.

For Distributor information:

Toll Free: 1.800.243.4788

Telephone: +1.203.393.0010

For on-line distributor information, visit LATICRETE at

[www.laticrete.com](http://www.laticrete.com).

##### Cost

Contact a LATICRETE Distributor in your area.

#### 7. WARRANTY

See 10. FILING SYSTEM:

DS 230.13: LATICRETE® Product Warranty

A component of:

DS 230.05: LATICRETE 5 Year System Warranty (United States and Canada)

DS 230.10: LATICRETE 10 Year System Warranty (United States and Canada)

DS 230.15: LATICRETE 15 Year System Warranty for Steel or Wood Framed Exterior Facades (United States and Canada)

DS 025.0: LATICRETE 25 Year System Warranty (United States and Canada)

DS 230.99: LATICRETE Lifetime System Warranty

## 8. MAINTENANCE

LATICRETE® and LATAPOXY® grouts require routine cleaning with a neutral pH cleaner (e.g. STONETECH® Stone & Tile Cleaner) and water. Contact the cleaner manufacturer if another cleaner type will be used to ensure compatibility with the grout. Installation performance and durability may depend on properly maintaining products supplied by other manufacturers. Routine maintenance can be done with detergents and a sponge or mop. For tough or difficult to remove soil, use STONETECH KLENZALL™ Cleaner (or a bleaching cleaner) on a nylon scrubbing pad or a long handled stiff bristle brush can be used. Please note: Prior to using any cleaning material on a tile, stone, etc. installation, test a discrete area or scrap piece of tile to ensure desired results. For additional information, please refer to the Grout Guide, TDS 400 and to TDS 113- Cement Grout Care & Maintenance for more information.

## 9. TECHNICAL SERVICES

### Technical Assistance

Information is available by calling the LATICRETE Technical Service Hotline:

Toll Free: 1.800.243.4788, ext. 235  
Telephone: +1.203.393.0010, ext. 235  
Fax: +1.203.393.1948

### Technical and Safety Literature

To acquire technical and safety literature, please visit our website at [www.laticrete.com](http://www.laticrete.com).

## 10. FILING SYSTEM

Additional product information is available on our website at [www.laticrete.com](http://www.laticrete.com). The following is a list of related documents:

DS 230.13: LATICRETE Product Warranty (United States and Canada)  
DS 230.05: LATICRETE 5 Year System Warranty (United States and Canada)  
DS 230.10: LATICRETE 10 Year System Warranty (United States and Canada)  
DS 230.15: LATICRETE 15 Year System Warranty - for Steel or Wood Framed Exterior Facades (United States and Canada)  
DS 025.0: LATICRETE 25 Year System Warranty (United States and Canada)  
DS 230.99: LATICRETE Lifetime System Warranty  
DS 030.0: SPECTRALOCK® 2000 IG  
DS 236.0: 9235 Waterproofing Membrane  
DS 663.0: HYDRO BAN®  
K20511: STONETECH Stone & Tile Cleaner  
K 20514: STONETECH KLENZALL Cleaner  
TDS 192: Installation of Ceramic Tile in Swimming Pools  
TDS 176: Hot Weather Tiling and Grouting  
TDS 400: Grout Guide  
TDS 172: Installation of Tile or Stone in Steam Rooms Over Backer Board  
TDS 113: Cement Grout Care and Maintenance for More Information

<sup>^</sup> United States Invention Patent No.: 6,784,229 (and other Patents)

---

LATICRETE International, Inc.  
One LATICRETE Park North, Bethany, CT 06524-3423 USA • 1.800.243.4788 • +1.203.393.0010 • [www.laticrete.com](http://www.laticrete.com)  
©2016 LATICRETE International, Inc. All trademarks shown are the intellectual properties of their respective owners.

**Available in Selected Colors:**  
Disponibles en colores seleccionados

For SPECTRALOCK® PRO Premium Grout and SPECTRALOCK PRO Grout, #44 Bright White may appear less bright than swatch.  
En el caso de SPECTRALOCK PRO Premium Grout y SPECTRALOCK PRO Grout, el color #44 Bright White (blanco brillante) puede parecer menos brillante que en la muestra.

SPECTRALOCK® PRO Premium Grout and SPECTRALOCK PRO Grout

PERMACOLOR® Select and PERMACOLOR Grout®

LATASIL™

Premium Acrylic Caulk

PLASMA™ (Also available in translucent) (también disponible en translúcido)

1500 Sanded Grout 25 lbs (11.3 kg)

1600 Unsanded Grout 25 lbs (11.3 kg)

1500 Sanded Grout 10 lbs (4.54 kg)

1600 Unsanded Grout 8 lbs (3.62 kg)

SPECTRALOCK 2000 IG (not available in #44 Bright White) (no disponible en #44 Blanco brillante)

↑ 44 Bright White	SL	PC	L	PAC	P	15	16	1500	1600
↑ 18 Sauterne	SL	PC		PAC	P	15	16	1600	2KIG
↑ 16 Siltstone	SL	PC		PAC					2KIG
↑ 85 Almond	SL	PC	L	PAC		15	16	1500	1600
↑ 03 Silk	SL	PC		PAC				1600	2KIG
↑ 23 Antique White	SL	PC	L	PAC	P	15	16	1500	1600
↑ 39 Mushroom	SL	PC	L	PAC	P	15		1500	1600
↑ 41 Kashmir	SL	PC		PAC				1600	2KIG
↑ 81 Butter Cream	SL	PC		PAC				1600	2KIG
↑ 52 Toasted Almond	SL	PC	L	PAC				1600	2KIG
↑ 55 Tawny	SL	PC	L	PAC					2KIG

↑ 17 Marble Beige	SL	PC	L	PAC	P	15	16	1500	1600	2KIG
↑ 40 Latte	SL	PC	L	PAC	P	15		1600	2KIG	
↑ 61 Parchment	SL	PC	L	PAC	P	15		1500	1600	2KIG
↑ 30 Sand Beige	SL	PC	L	PAC	P	15		1500	1600	2KIG
↑ 56 Desert Khaki	SL	PC	L	PAC	P				2KIG	
↑ 38 River Rock	SL	PC		PAC	P				2KIG	
↑ 27 Hemp	SL	PC		PAC		15		1600	2KIG	
↑ 57 Hot Cocoa	SL	PC	L	PAC					2KIG	
↑ 92 Saltillo	SL	PC		PAC				1600	2KIG	
↑ 58 Terra Cotta	SL	PC	L	PAC					2KIG	
↑ 46 Quarry Red	SL	PC		PAC				1600	2KIG	
↑ 43 Chocolate Truffle	SL	PC		PAC				1600	2KIG	
↑ 66 Chestnut Brown	SL	PC	L	PAC		15		1600	2KIG	
↑ 59 Espresso	SL	PC	L	PAC	P				2KIG	

↑ 35 Mocha	SL	PC	L	PAC	P	15		1600	2KIG
↑ 50 Sea Glass	SL	PC	L	PAC				1600	2KIG
↑ 67 Autumn Green	SL	PC	L	PAC					2KIG
↑ 53 Twilight Blue	SL	PC		PAC					2KIG
↑ 42 Platinum	SL	PC	L	PAC	P	15		1500	1600
↑ 91 Slate Grey	SL	PC		PAC				1600	2KIG
↑ 88 Silver Shadow	SL	PC	L	PAC	P	15	16	1600	2KIG
↑ 89 Smoke Grey	SL	PC	L	PAC	P	15		1500	1600
↑ 90 Light Pewter	SL	PC		PAC	P	15		1600	2KIG
↑ 78 Sterling Silver	SL	PC	L	PAC	P	15		1600	2KIG
↑ 24 Natural Grey	SL	PC	L	PAC	P	15		1500	1600
↑ 34 Sandstone	SL	PC		PAC				1600	2KIG
↑ 60 Dusty Grey	SL	PC	L	PAC	P				2KIG
↑ 45 Raven	SL	PC		PAC	P	15		1600	2KIG
↑ 22 Midnight Black	SL	PC	L	PAC	P	15		1600	2KIG

Please note that the colors contained within this PDF-based Grout and Sealant Color Chart are an approximation only. Please see [www.laticrete.com/tools](http://www.laticrete.com/tools) to order a printed copy



# SAFETY DATA SHEET

## 1. Identification

<b>Product identifier</b>	<b>Permacolor Select</b>
<b>Other means of identification</b>	Not available.
<b>Recommended use</b>	Grout.
<b>Recommended restrictions</b>	Workers (and your customers or users in the case of resale) should be informed of the potential presence of respirable dust and respirable crystalline silica as well as their potential hazards. Appropriate training in the proper use and handling of this material should be provided as required under applicable regulations.

## Manufacturer/Importer/Supplier/Distributor information

<b>Company Name</b>	LATICRETE International
<b>Address</b>	1 Laticrete Park, N Bethany, CT 06524
<b>Telephone</b>	(203)-393-0010
<b>Contact person</b>	Steve Fine
<b>Website</b>	www.laticrete.com
<b>Emergency phone number</b>	Call CHEMTREC day or night USA/Canada - 1.800.424.9300 Mexico - 1.800.681.9531 Outside USA/Canada 1.703.527.3887

## 2. Hazard(s) identification

<b>Physical hazards</b>	Not classified.	
<b>Health Hazards</b>	Skin corrosion/irritation	Category 2
	Serious eye damage/eye irritation	Category 1
	Sensitization, skin	Category 1
	Carcinogenicity	Category 1A
	Reproductive toxicity	Category 1B
	Specific Target Organ Toxicity, Repeated Exposure	Category 2 (Lung)
<b>OSHA defined hazards</b>	Not classified.	

## Label elements



<b>Signal word</b>	Danger
<b>Hazard statement</b>	Causes skin irritation. Causes serious eye damage. May cause an allergic skin reaction. May cause cancer. May damage fertility or the unborn child. May cause damage to organs (Lung) through prolonged or repeated exposure.
<b>Precautionary statement</b>	
<b>Prevention</b>	Obtain special instructions before use. Do not handle until all safety precautions have been read and understood. Do not breathe dust/fume. Wear protective gloves/protective clothing/eye protection/face protection. Wash thoroughly after handling. Contaminated work clothing must not be allowed out of the workplace.
<b>Response</b>	If exposed or concerned: Get medical advice/attention. If on skin: Wash with plenty of water. If skin irritation or rash occurs: Get medical advice/attention. Take off contaminated clothing and wash before reuse. If in eyes: Rinse cautiously with water for several minutes. Remove contact lenses, if present and easy to do. Continue rinsing. Immediately call a poison center/doctor.
<b>Storage</b>	Store locked up.
<b>Disposal</b>	Dispose of contents/container in accordance with local/regional/national/international regulations.

**Hazard(s) not otherwise classified (HNOC)**

None known.

### 3. Composition/information on ingredients

#### Mixtures

Chemical name	CAS number	%
Silica Sand	14808-60-7	55 - 65
Calcium aluminate cement	65997-16-2	22 - 25
Calcium sulfate	7778-18-9	5 - 7
Portland Cement	65997-15-1	1 - 4
Calcium sulfate hemihydrate	26499-65-0	1 - 2
Lithium Carbonate	554-13-2	0.1 - 0.3

**Composition comments** All concentrations are in percent by weight unless ingredient is a gas. Gas concentrations are in percent by volume.

### 4. First-aid measures

**Inhalation** Remove victim to fresh air and keep at rest in a position comfortable for breathing. Call a physician if symptoms develop or persist.

**Skin contact** Wash off with soap and plenty of water. If skin irritation or rash occurs: Get medical advice/attention. Take off contaminated clothing and wash before reuse.

**Eye contact** Do not rub eyes. Immediately flush eyes with plenty of water for at least 15 minutes. Remove contact lenses, if present and easy to do. Continue rinsing. Call a physician or poison control center immediately.

**Ingestion** Rinse mouth. Get medical attention if symptoms occur.

**Most important symptoms/effects, acute and delayed** Rash. Coughing. Irritant effects. Symptoms may include stinging, tearing, redness, swelling, and blurred vision. Permanent eye damage including blindness could result. Prolonged exposure may cause chronic effects.

**Indication of immediate medical attention and special treatment needed** Provide general supportive measures and treat symptomatically. Symptoms may be delayed.

**General information** Ensure that medical personnel are aware of the material(s) involved, and take precautions to protect themselves. IF exposed or concerned: Get medical advice/attention.

### 5. Fire-fighting measures

**Suitable extinguishing media** Water fog. Foam. Dry chemical powder. Carbon dioxide (CO<sub>2</sub>).

**Unsuitable extinguishing media** None known.

**Specific hazards arising from the chemical** During fire, gases hazardous to health may be formed.

**Special protective equipment and precautions for firefighters** Self-contained breathing apparatus and full protective clothing must be worn in case of fire. Selection of respiratory protection for firefighting: follow the general fire precautions indicated in the workplace.

**Fire fighting equipment/instructions** In case of fire and/or explosion do not breathe fumes.

**General fire hazards** No unusual fire or explosion hazards noted.

### 6. Accidental release measures

**Personal precautions, protective equipment and emergency procedures** Keep unnecessary personnel away. Keep upwind. Avoid formation of dust. Wear appropriate protective equipment and clothing during clean-up. Do not touch damaged containers or spilled material unless wearing appropriate protective clothing. Ensure adequate ventilation.

**Methods and materials for containment and cleaning up** Stop the flow of material, if this is without risk. Sweep or shovel up material and place in a clearly labeled container for waste. Collect dust using a vacuum cleaner. Following product recovery, flush area with water.

**Environmental precautions** Avoid discharge into drains, water courses or onto the ground.

## 7. Handling and storage

### Precautions for safe handling

Do not handle until all safety precautions have been read and understood. Minimize dust generation and accumulation. Wear appropriate personal protective equipment. Do not breathe dust. Avoid contact with eyes, skin, and clothing. Provide adequate ventilation. Observe good industrial hygiene practices.

### Conditions for safe storage, including any incompatibilities

Keep container tightly closed. Store in a cool, dry place out of direct sunlight.

## 8. Exposure controls/personal protection

### Occupational exposure limits

#### US. OSHA Table Z-1 Limits for Air Contaminants (29 CFR 1910.1000)

Components	Type	Value	Form
Calcium sulfate (CAS 7778-18-9)	PEL	5 mg/m <sup>3</sup>	Respirable fraction.
		15 mg/m <sup>3</sup>	Total dust.
Calcium sulfate hemihydrate (CAS 26499-65-0)	PEL	5 mg/m <sup>3</sup>	Respirable fraction.
		15 mg/m <sup>3</sup>	Total dust.
Portland Cement (CAS 65997-15-1)	PEL	5 mg/m <sup>3</sup>	Respirable fraction.
		15 mg/m <sup>3</sup>	Total dust.

#### US. OSHA Table Z-3 (29 CFR 1910.1000)

Components	Type	Value	Form
Portland Cement (CAS 65997-15-1)	TWA	50 mppcf	
Silica Sand (CAS 14808-60-7)	TWA	0.3 mg/m <sup>3</sup>	Total dust.
		0.1 mg/m <sup>3</sup>	Respirable.
		2.4 mppcf	Respirable.

#### US. ACGIH Threshold Limit Values

Components	Type	Value	Form
Calcium sulfate (CAS 7778-18-9)	TWA	10 mg/m <sup>3</sup>	Inhalable fraction.
Portland Cement (CAS 65997-15-1)	TWA	1 mg/m <sup>3</sup>	Respirable fraction.
Silica Sand (CAS 14808-60-7)	TWA	0.025 mg/m <sup>3</sup>	Respirable fraction.

#### US. NIOSH: Pocket Guide to Chemical Hazards

Components	Type	Value	Form
Calcium sulfate (CAS 7778-18-9)	TWA	5 mg/m <sup>3</sup>	Respirable.
		10 mg/m <sup>3</sup>	Total
Calcium sulfate hemihydrate (CAS 26499-65-0)	TWA	5 mg/m <sup>3</sup>	Respirable.
		10 mg/m <sup>3</sup>	Total
Portland Cement (CAS 65997-15-1)	TWA	5 mg/m <sup>3</sup>	Respirable.
		10 mg/m <sup>3</sup>	Total
Silica Sand (CAS 14808-60-7)	TWA	0.05 mg/m <sup>3</sup>	Respirable dust.

### Biological limit values

No biological exposure limits noted for the ingredient(s).

### Exposure guidelines

Occupational exposure to nuisance dust (total and respirable) and respirable crystalline silica should be monitored and controlled.



<b>Appropriate engineering controls</b>	Good general ventilation (typically 10 air changes per hour) should be used. Ventilation rates should be matched to conditions. If applicable, use process enclosures, local exhaust ventilation, or other engineering controls to maintain airborne levels below recommended exposure limits. If exposure limits have not been established, maintain airborne levels to an acceptable level. Provide eyewash station.
<b>Individual protection measures, such as personal protective equipment</b>	
<b>Eye/face protection</b>	Wear safety glasses with side shields (or goggles).
<b>Skin protection</b>	
<b>Hand protection</b>	Wear chemical-resistant, impervious gloves.
<b>Other</b>	Wear appropriate chemical resistant clothing.
<b>Respiratory protection</b>	Wear a dust mask if dust is generated above exposure limits.
<b>Thermal hazards</b>	Wear appropriate thermal protective clothing, when necessary.
<b>General hygiene considerations</b>	Always observe good personal hygiene measures, such as washing after handling the material and before eating, drinking, and/or smoking. Routinely wash work clothing and protective equipment to remove contaminants. Contaminated work clothing should not be allowed out of the workplace.

## 9. Physical and chemical properties

### Appearance

<b>Physical state</b>	Solid.
<b>Form</b>	Powder.
<b>Color</b>	Colored.
<b>Odor</b>	Not available.
<b>Odor threshold</b>	Not available.
<b>pH</b>	Not available.
<b>Melting point/freezing point</b>	Not available.
<b>Initial boiling point and boiling range</b>	Not available.
<b>Flash point</b>	Not flammable or combustible.
<b>Evaporation rate</b>	Not available.
<b>Flammability (solid, gas)</b>	Not available.
<b>Upper/lower flammability or explosive limits</b>	
<b>Flammability limit - lower (%)</b>	Not available.
<b>Flammability limit - upper (%)</b>	Not available.
<b>Explosive limit - lower (%)</b>	Not available.
<b>Explosive limit - upper (%)</b>	Not available.
<b>Vapor pressure</b>	Not available.
<b>Vapor density</b>	Not available.
<b>Relative density</b>	Not available.
<b>Solubility(ies)</b>	
<b>Solubility (water)</b>	Insoluble in water.
<b>Partition coefficient (n-octanol/water)</b>	Not available.
<b>Auto-ignition temperature</b>	Not available.
<b>Decomposition temperature</b>	Not available.
<b>Viscosity</b>	Not available.

## 10. Stability and reactivity

<b>Reactivity</b>	The product is stable and non-reactive under normal conditions of use, storage and transport.
<b>Chemical stability</b>	Material is stable under normal conditions.
<b>Possibility of hazardous reactions</b>	No dangerous reaction known under conditions of normal use.

<b>Conditions to avoid</b>	Contact with incompatible materials.
<b>Incompatible materials</b>	Strong oxidizing agents.
<b>Hazardous decomposition products</b>	No hazardous decomposition products are known.

## 11. Toxicological information

### Information on likely routes of exposure

<b>Inhalation</b>	Dust irritates the respiratory system, and may cause coughing and difficulties in breathing.
<b>Skin contact</b>	Causes skin irritation. May cause an allergic skin reaction. Prolonged contact with wet cement/mixture may cause burns.
<b>Eye contact</b>	Causes serious eye damage. Prolonged contact with wet cement/mixture may cause burns.
<b>Ingestion</b>	Swallowing may cause gastrointestinal irritation.

**Symptoms related to the physical, chemical and toxicological characteristics** Rash. Coughing. Irritant effects. Symptoms may include stinging, tearing, redness, swelling, and blurred vision. Permanent eye damage including blindness could result. Prolonged exposure may cause chronic effects.

### Information on toxicological effects

**Acute toxicity** May cause respiratory irritation.

Components	Species	Test Results
Calcium sulfate (CAS 7778-18-9)		
<b>Acute</b>		
<i>Inhalation</i>		
LC50	Rat	> 3.26 mg/l, 4 Hours
<i>Oral</i>		
LD50	Mouse	4704 mg/kg
	Rat	> 1581 mg/kg

**Skin corrosion/irritation** Causes skin irritation.

**Serious eye damage/eye irritation** Causes serious eye damage.

### Respiratory or skin sensitization

<b>Respiratory sensitization</b>	No data available.
<b>Skin sensitization</b>	May cause an allergic skin reaction.

**Germ cell mutagenicity** No data available to indicate product or any components present at greater than 0.1% are mutagenic or genotoxic.

**Carcinogenicity** May cause cancer. In 1997, IARC (the International Agency for Research on Cancer) concluded that crystalline silica inhaled from occupational sources can cause lung cancer in humans. However in making the overall evaluation, IARC noted that "carcinogenicity was not detected in all industrial circumstances studied. Carcinogenicity may be dependent on inherent characteristics of the crystalline silica or on external factors affecting its biological activity or distribution of its polymorphs." (IARC Monographs on the evaluation of the carcinogenic risks of chemicals to humans, Silica, silicates dust and organic fibres, 1997, Vol. 68, IARC, Lyon, France.) In June 2003, SCOEL (the EU Scientific Committee on Occupational Exposure Limits) concluded that the main effect in humans of the inhalation of respirable crystalline silica dust is silicosis. "There is sufficient information to conclude that the relative risk of lung cancer is increased in persons with silicosis (and, apparently, not in employees without silicosis exposed to silica dust in quarries and in the ceramic industry). Therefore, preventing the onset of silicosis will also reduce the cancer risk..." (SCOEL SUM Doc 94-final, June 2003)

#### IARC Monographs. Overall Evaluation of Carcinogenicity

Silica Sand (CAS 14808-60-7) 1 Carcinogenic to humans.

#### NTP Report on Carcinogens

Silica Sand (CAS 14808-60-7) Known To Be Human Carcinogen.

#### OSHA Specifically Regulated Substances (29 CFR 1910.1001-1050)

Not listed.

**Reproductive toxicity** May damage fertility or the unborn child.

**Specific target organ toxicity - single exposure** Not classified.

**Specific target organ toxicity - repeated exposure** May cause damage to organs (Lung) through prolonged or repeated exposure.

**Aspiration hazard** Due to the physical form of the product it is not an aspiration hazard.

**Chronic effects** Prolonged or repeated exposure may cause lung injury, including silicosis.

## 12. Ecological information

**Ecotoxicity** Not expected to be harmful to aquatic organisms.

**Persistence and degradability** No data is available on the degradability of this product.

**Bioaccumulative potential** No data available for this product.

**Mobility in soil** The product is not mobile in soil.

**Other adverse effects** No other adverse environmental effects (e.g. ozone depletion, photochemical ozone creation potential, endocrine disruption, global warming potential) are expected from this component.

## 13. Disposal considerations

**Disposal instructions** Dispose of contents/container in accordance with local/regional/national/international regulations. Do not contaminate ponds, waterways or ditches with chemical or used container.

**Hazardous waste code** The waste code should be assigned in discussion between the user, the producer and the waste disposal company.

**Waste from residues / unused products** Dispose of in accordance with local regulations. Empty containers or liners may retain some product residues. This material and its container must be disposed of in a safe manner (see: Disposal instructions).

**Contaminated packaging** Empty containers should be taken to an approved waste handling site for recycling or disposal. Since emptied containers may retain product residue, follow label warnings even after container is emptied.

## 14. Transport information

**DOT**  
Not regulated as dangerous goods.

**IATA**  
Not regulated as dangerous goods.

**IMDG**  
Not regulated as dangerous goods.

**Transport in bulk according to Annex II of MARPOL 73/78 and the IBC Code** This substance/mixture is not intended to be transported in bulk.

## 15. Regulatory information

**US federal regulations** This product is a "Hazardous Chemical" as defined by the OSHA Hazard Communication Standard, 29 CFR 1910.1200.

### **TSCA Section 12(b) Export Notification (40 CFR 707, Subpt. D)**

Not regulated.

### **OSHA Specifically Regulated Substances (29 CFR 1910.1001-1050)**

Not listed.

### **CERCLA Hazardous Substance List (40 CFR 302.4)**

Not listed.

### **Superfund Amendments and Reauthorization Act of 1986 (SARA)**

**Hazard categories**  
Immediate Hazard - Yes  
Delayed Hazard - Yes  
Fire Hazard - No  
Pressure Hazard - No  
Reactivity Hazard - No

### **SARA 302 Extremely hazardous substance**

Not listed.

**SARA 311/312 Hazardous chemical** Yes

**SARA 313 (TRI reporting)**  
Not regulated.

## Other federal regulations

### Clean Air Act (CAA) Section 112 Hazardous Air Pollutants (HAPs) List

Not regulated.

### Clean Air Act (CAA) Section 112(r) Accidental Release Prevention (40 CFR 68.130)

Not regulated.

**Safe Drinking Water Act (SDWA)** Not regulated.

**US state regulations** WARNING: This product contains chemical(s) known to the State of California to cause birth defects or other reproductive harm.

### US. Massachusetts RTK - Substance List

Calcium sulfate (CAS 7778-18-9)  
Calcium sulfate hemihydrate (CAS 26499-65-0)  
Lithium Carbonate (CAS 554-13-2)  
Portland Cement (CAS 65997-15-1)  
Silica Sand (CAS 14808-60-7)

### US. New Jersey Worker and Community Right-to-Know Act

Calcium sulfate (CAS 7778-18-9)  
Calcium sulfate hemihydrate (CAS 26499-65-0)  
Lithium Carbonate (CAS 554-13-2)  
Portland Cement (CAS 65997-15-1)  
Silica Sand (CAS 14808-60-7)

### US. Pennsylvania Worker and Community Right-to-Know Law

Calcium sulfate (CAS 7778-18-9)  
Calcium sulfate hemihydrate (CAS 26499-65-0)  
Portland Cement (CAS 65997-15-1)  
Silica Sand (CAS 14808-60-7)

### US. Rhode Island RTK

Lithium Carbonate (CAS 554-13-2)

### US. California Proposition 65

#### US - California Proposition 65 - Carcinogens & Reproductive Toxicity (CRT): Listed substance

Lithium Carbonate (CAS 554-13-2)  
Silica Sand (CAS 14808-60-7)

## International Inventories

Country(s) or region	Inventory name	On inventory (yes/no)*
Australia	Australian Inventory of Chemical Substances (AICS)	No
Canada	Domestic Substances List (DSL)	Yes
Canada	Non-Domestic Substances List (NDSL)	No
China	Inventory of Existing Chemical Substances in China (IECSC)	Yes
Europe	European Inventory of Existing Commercial Chemical Substances (EINECS)	Yes
Europe	European List of Notified Chemical Substances (ELINCS)	No
Japan	Inventory of Existing and New Chemical Substances (ENCS)	No
Korea	Existing Chemicals List (ECL)	Yes
New Zealand	New Zealand Inventory	Yes
Philippines	Philippine Inventory of Chemicals and Chemical Substances (PICCS)	No
United States & Puerto Rico	Toxic Substances Control Act (TSCA) Inventory	Yes

\*A "Yes" indicates this product complies with the inventory requirements administered by the governing country(s).

A "No" indicates that one or more components of the product are not listed or exempt from listing on the inventory administered by the governing country(s).

## 16. Other information, including date of preparation or last revision

**Issue date** 16-October-2014

**Revision date** -

**Version #** 01

**NFPA ratings****References**

HSDB® - Hazardous Substances Data Bank  
Registry of Toxic Effects of Chemical Substances (RTECS)

**Disclaimer**

The information in this (M)SDS was obtained from sources which we believe are reliable but cannot guarantee. Additionally, your use of this information is beyond our control and may be beyond our knowledge. Therefore, the information is provided without any representation or warranty express or implied.

# Thank You

Thank you for using the Pro Material Solutions site! The Pro Material Solutions site provides users the ability to create and share palettes, access hundreds of manufacturers, thousands of products, order samples in seconds, unique product filtering system, favorites library, one touch spec downloads.

To learn more about Pro Material Solutions and our products and services, visit our website at ProMatSolutions.com or contact us directly at [info@promaterialsolutions.com](mailto:info@promaterialsolutions.com)

## Legal

We utilize information gleaned from manufacturer websites to compile data and images to create a custom Project Binder for you. Please note that acceptance of this Project Binder, visiting our website, or utilizing our related services explicitly waives Pro Material Solutions of ALL liability pursuant to our Terms and Conditions.